

Protocol

Fertility Among Female Survivors of Childhood, Adolescent, and Young Adult Cancer: Protocol for Two Pan-European Studies (PanCareLIFE)

Marleen van den Berg^{1*}, PhD; Marloes van Dijk^{1*}, MSc; Julianne Byrne², PhD; Helen Campbell², BSc, MSc; Claire Berger³, MD; Anja Borgmann-Staudt⁴, PhD, MD; Gabriele Calaminus⁵, MD; Uta Dirksen^{6,7}, MD, PhD; Jeanette F Winther^{8,9}, MD, PhD; Sophie D Fossa¹⁰, MD, PhD; Desiree Grabow¹¹, PhD; Victoria L Grandage¹², MD, PhD; Marry M van den Heuvel-Eibrink^{13,14}, MD, PhD; Melanie Kaiser¹¹; Tomas Kepak¹⁵, MD; Leontien C Kremer^{13,16}, MD, PhD; Jarmila Kruseova¹⁷, MD, PhD; Claudia E Kuehni¹⁸, MD, PhD; Cornelis B Lambalk¹⁹, MD, PhD; Flora E van Leeuwen²⁰, PhD; Alison Leiper²¹, MD; Dalit Modan-Moses^{22,23}, MD, PhD; Vera Morsellino²⁴, MD, PhD; Claudia Spix¹¹, PhD; Peter Kaatsch¹¹, PhD; Eline van Dulmen-den Broeder¹, PhD; The PanCareLIFE Consortium *

¹Department of Pediatrics, Amsterdam UMC, Vrije Universiteit, Amsterdam, Netherlands

²Boyne Research Institute, Drogheda, Ireland

³Centre Hospitalier Universitaire de Saint-Étienne, Saint-Étienne, France

⁴Division of Oncology and Hematology, Department of Pediatrics, Charité – Universitätsmedizin Berlin, Berlin, Germany

⁵University Children's Hospital Bonn, University of Bonn Medical School, Bonn, Germany

⁶Pediatrics III, University Hospital Essen, Essen, Germany

⁷West German Cancer Centre, German Cancer Research Centre, Essen, Germany

⁸Danish Cancer Society Research Center, Copenhagen, Denmark

⁹Department of Clinical Medicine, Faculty of Health, Aarhus University Hospital, Aarhus, Denmark

¹⁰Oslo University Hospital, Oslo, Norway

¹¹German Childhood Cancer Registry, Institute for Medical Biometry, Epidemiology and Informatics, University Medical Center Mainz, Mainz, Germany

¹²University College London Hospital, London, United Kingdom

¹³Princess Máxima Center for Pediatric Oncology, Utrecht, Netherlands

¹⁴Erasmus MC University Medical Center, Rotterdam, Netherlands

¹⁵International Clinical Research Center of St Anne's University Hospital Brno, Brno, Czech Republic

¹⁶Department of Pediatrics, Amsterdam UMC, University of Amsterdam, Amsterdam, Netherlands

¹⁷Motol Teaching Hospital, Prague, Czech Republic

¹⁸Swiss Childhood Cancer Registry, University of Bern, Bern, Switzerland

¹⁹Department of Obstetrics and Gynaecology, Amsterdam UMC, Vrije Universiteit, Amsterdam, Netherlands

²⁰Netherlands Cancer Institute, Amsterdam, Netherlands

²¹Great Ormond Street Children's Hospital, London, United Kingdom

²²Edmond and Lily Safra Children's Hospital, Chaim Sheba Medical Center, Tel-Aviv, Israel

²³The Sackler Faculty of Medicine, Tel-Aviv University, Tel-Aviv, Israel

²⁴Gaslini Children Hospital, Genova, Italy

* these authors contributed equally

Corresponding Author:

Marleen van den Berg, PhD

Department of Pediatrics

Amsterdam UMC, Vrije Universiteit

PO Box 7057

Amsterdam, 1007 MB

Netherlands

Phone: 31 204446021

Fax: 31 204445122

Email: mh.vandenberg@vumc.nl

Abstract

Background: Despite a significant number of studies on female fertility following childhood, adolescent, and young adult (CAYA) cancer, studies establishing precise (dose-related) estimates of treatment-related risks are still scarce. Previous studies have been underpowered, did not include detailed treatment information, or were based on self-report only without any hormonal assessments. More precise assessments of who is at risk for sub- or infertility are needed.

Objective: The objective of our study is to describe the design and methods of 2 studies on female fertility (a cohort study and a nested case-control study) among female survivors of CAYA cancer performed within the European PanCareLIFE project.

Methods: For the cohort study, which aims to evaluate the overall risk of fertility impairment, as well as the risk for specific subgroups of female CAYA cancer survivors, 13 institutions from 9 countries provide data on fertility impairment. Survivors are defined as being fertility impaired if they meet at least one of 8 different criteria based on self-reported and hormonal data. For the nested case-control study, which aims to identify specific treatment-related risk factors associated with fertility impairment in addition to possible dose-response relationships, cases (fertility impaired survivors) are selected from the cohort study and matched to controls (survivors without fertility impairment) on a 1:2 basis.

Results: Of the 10,964 survivors invited for the cohort study, data are available from 6619 survivors, either questionnaire-based only (n=4979), hormonal-based only (n=72), or both (n=1568). For the nested case-control study, a total of 450 cases and 882 controls are identified.

Conclusions: Results of both PanCareLIFE fertility studies will provide detailed insight into the risk of fertility impairment following CAYA cancer and diagnostic- or treatment-related factors associated with an increased risk. This will help clinicians to adequately counsel both girls and young women, who are about to start anticancer treatment, as well as adult female CAYA cancer survivors, concerning future parenthood and to timely refer them for fertility preservation. Ultimately, we aim to empower patients and survivors and improve their quality of life.

Registered Report Identifier: RR1-10.2196/10824

(*JMIR Res Protoc* 2018;7(9):e10824) doi: [10.2196/10824](https://doi.org/10.2196/10824)

KEYWORDS

fertility; late effects; childhood cancer; female; cohort study; case-control study

Introduction

Advances in diagnosis and treatment of childhood cancer have led to major improvements in 10-year survival rate, which now exceeds 80% [1]. As a consequence, the number of childhood cancer survivors has substantially increased and many of them have reached an age at which they consider parenthood. However, compromised reproductive function is an important and frequently encountered late effect of treatment in female cancer survivors with a high impact on quality of life [2-4]. Alkylating chemotherapy and radiotherapy involving the ovaries have been identified as the 2 main risk factors for fertility impairment, and postpubertal treatment seems to be more gonadotoxic than prepubertal treatment [5,6]. In addition, cranial radiotherapy may also impair fertility, and a possible role for nonalkylating agents must be considered [7].

Despite a significant number of studies on female fertility following childhood and adolescent cancer, studies establishing precise (dose-related) estimates of treatment-related risks are scarce. Previous studies have been underpowered [6,8,9], did not include detailed treatment information [10], or were based on self-report only without any clinical validation [11,12]. In addition, the different methods used to assess fertility (questionnaires, hormonal markers, and ultrasound measurements of the reproductive organs [13,14]), make it difficult to compare studies. More precise assessments of who is at risk, either for immediate and persistent infertility or a shorter-than-anticipated reproductive window, are essential to

prevent involuntary childlessness, secondary infertility (ie, incomplete family planning), and increased use of artificial reproductive techniques [15]. Assessments should include both established and relatively new clinical markers, for example, evaluation of menstrual and pregnancy history or levels of follicle stimulating hormone (FSH) and anti-Müllerian hormone (AMH). Moreover, large childhood cancer survivor cohorts with detailed treatment and long-term follow-up data on fertility outcomes are needed to disentangle specific treatment-related fertility risks.

We, therefore, initiated the PanCareLIFE project. This pan-European project, originating from the PanCare network, is a European Union funded project (7th Framework Programme, Theme Health), coordinated by the University Medical Center Mainz (Germany), in which investigators from 10 countries provide data from over 15,000 CAYA cancer survivors [16]. The project is divided into 8 work packages (WP1-WP8), each with distinct activities, and addresses 3 research topics (ototoxicity, fertility, and quality of life). PanCareLIFE strives for survivors of childhood, adolescent, and young adult (CAYA) cancer to enjoy the same quality of life and opportunities as their peers who have not had cancer. The aim of this study is to describe the design, methods, and participating cohorts of 2 PanCareLIFE studies in WP3 (led by Amsterdam UMC, Vrije Universiteit, AUMC) on female fertility, a cohort study and a nested case-control study.

Methods

The PanCareLIFE Female Fertility Cohort Study

The aim of the female fertility cohort study is to evaluate the overall prevalence of fertility impairment among female CAYA cancer survivors who are at least 5 years past diagnosis and alive at the time of study assessment. Moreover, it aims to assess the prevalence of fertility impairment for specific subgroups of female CAYA cancer survivors based on cancer diagnosis, type of treatment (simple, yes or no, information on chemotherapy, radiotherapy, and surgery), age at treatment, and calendar period of treatment.

In total, 13 institutions from 9 countries (Germany, Czech Republic, Netherlands, Italy, Switzerland, France, United Kingdom, Norway, and Israel) collect cross-sectional data for the PanCareLIFE female fertility cohort study. These institutions, referred to as data providers, provide data from 16 different institutional cohorts in total. Two of these cohorts are registry-based cohorts (VIVE cohort and the Swiss Childhood Cancer Survivor Study cohort), whereas all other cohorts are hospital-based. Some of these data providers have previously collected their data as part of a local fertility study [3,8,17-21], whereas other data providers collect their data specifically during the PanCareLIFE project. All survivors included in the PanCareLIFE female fertility cohort study were treated between 1963 and 2014. However, each of the 16 cohorts encompasses a specific time period of treatment, as identified by the data providers. In addition, although most cohorts included all types of cancer diagnoses, some cohorts only included survivors who were diagnosed with a specific type of cancer (Table 1; see Multimedia Appendix 1 for an expanded version).

Study Population

The eligibility criteria for the female fertility cohort study as well as the different survivor groups identified based on eligibility and type of response are described in Figure 1. The base cohort includes all survivors meeting the inclusion criteria. Survivors who subsequently meet one of the exclusion criteria are deemed ineligible and are not invited for the study (excluded subjects). All remaining women have either been invited to participate in a local fertility study in the past or are specifically invited to participate in the PanCareLIFE female fertility study (invited subjects).

Those who do not respond to the invitation as well as those who actively refuse to participate are categorized as nonparticipants. Participants are defined as those who agree to participate by providing either questionnaire data only, hormonal data only, or both. All local ethical committees have approved the use of the collected data from their institute for the PanCareLIFE project.

Data Collection

For all women in the base cohort demographic, diagnostic and treatment-related data are collected from medical record files and registries. Basic demographic data include month and year of birth and of latest follow-up. Diagnostic data include type of diagnosis (based on the 3rd version of the International

Classification of Childhood Cancer) [22] and month and year of diagnosis. Treatment-related data comprise surgery (yes or no), chemotherapy (yes or no), radiotherapy (yes or no), and bone marrow transplantation (yes or no) complemented with the starting month and year of each treatment. Diagnostic and treatment data are collected for all malignancies and possible relapses.

Data on fertility impairment are collected by questionnaire and hormonal assessments. A specific PanCareLIFE fertility questionnaire is developed for those data providers who collect questionnaire data on fertility issues during the PanCareLIFE project. This questionnaire evaluates sociodemographic and menstrual cycle characteristics, menopausal status, use of oral contraceptives and hormones, reproductive history, and smoking and alcohol behaviors. The questionnaire is translated from the original English into German, Czech, Italian, and Hebrew. All translated questionnaires are back-translated into English (by another translator) to check if the translation is performed properly.

Questionnaire data from questionnaires used by data providers for previous local fertility studies address fertility issues using different questions at different levels of detail and with different answer categories. Therefore, a specific task for WP3 investigators is to recode the relevant data from these questionnaires for compatibility with the variables used in the PanCareLIFE fertility questionnaire in close collaboration with the relevant data provider to make them as compatible as possible.

Hormonal measurements primarily involve the assessment of AMH levels. Study participants are asked to provide a blood sample during a clinic visit (which takes place either as part of standard follow-up care or is specifically scheduled for the study). Part of the sample is centrifuged and stored at -20°C . Subsequently, serum samples are transported in batches by courier to AUMC, where AMH levels are determined centrally in the endocrine laboratory. An ultrasensitive Elecsys AMH assay is used (Roche Diagnostics GmbH, Mannheim, Germany) with an intraassay coefficient of variation of 0.5%-1.8%, a limit of detection of 0.01 $\mu\text{g/L}$, and a limit of quantitation of 0.03 $\mu\text{g/L}$ [23]. FSH levels are accepted if they have been measured within the previous 2 years or during standard patient care throughout the course of the PanCareLIFE project. FSH measurements are done locally and the results are sent to AUMC. Specifics about the timing of blood sampling, that is, during a natural menstrual cycle, during hormonal contraceptive therapy or hormone replacement therapy, during the pill-free interval, performed anytime (no cycle), during pregnancy, or unknown, are provided.

Data providers collect all data from their own survivor cohort, enter them into a local study database (under a unique PanCareLIFE-ID number), anonymize the data, check the quality of the data, and then send the data to the coordinating PanCareLIFE data center in Mainz. In this center, all subjects are assigned a new unique identification number. Subsequently, the data are compiled and sent to the WP3 investigators at AUMC, as seen in Multimedia Appendix 2.

Table 1. Characteristics of cohorts included in the cohort study and the nested case-control study.

| Data provider or institute | Study cohort | Data | Women invited (n=10,964) of total base cohort ^a (N=14,379), n/N | Questionnaires provided (N=6547), n | Serum samples provided (N=1640), n | Time period of data collection |
|--|--|-----------------|--|-------------------------------------|------------------------------------|--------------------------------|
| DCOG LATER (Amsterdam UMC, Erasmus Medical Center Rotterdam) ^b , Netherlands | DCOG LATER cohort ^c [17] | PR ^d | 1684/2190 | 1109 | 619 | 2004-2014 |
| Netherlands Cancer Institute Amsterdam, Netherlands | Hodgkin Lymphoma cohort [19,21] | PR | 275/450 | 203 | 0 | 1997-2016 |
| Universitätsklinikum Bonn, Germany | VIVE cohort ^c | PR | 4467/5909 | 2482 | 0 | 2014-2015 |
| Westfaelische Wilhelms-Universitaet Muenster ^b , Germany | Ewing 2008 Clinical Trials cohort | DU ^e | 140/161 | 46 | 24 | 2015-2016 |
| Charité - Universitätsmedizin Berlin, Germany | Berlin Hormone Analyses cohort ^c [3] | PR | 344/402 | 83 | 69 | 2008-2009 |
| Fakultni nemocnice Brno ^b , Czech Republic | Cohort female 5-yr cancer survivors Brno ^c | DU | 203/283 | 182 | 180 | 2015-2016 |
| Fakultni nemocnice v Motol ^b , Czech Republic | Cohort female 5-yr cancer survivors Motol ^c | DU | 1063/1398 | 574 | 301 | 2014-2016 |
| Istituto Giannina Gaslini ^b , Italy | Gaslini female survivors cohort ^c | DU | 814/1111 | 563 | 122 | 2015-2016 |
| University of Bern, Switzerland | Swiss Childhood Cancer Survivor Study cohort 1 ^c [18] | PR | 977/1135 | 685 | 0 | 2007-2013 |
| University of Bern, Switzerland | Swiss Childhood Cancer Survivor Study cohort 2 ^c [18] | PR | 228/335 | 113 | 0 | 2015-2016 |
| Great Ormond Street Children's Hospital/University College London Hospital ^c , United Kingdom | Hematopoietic stem cell transplantation cohort ^c | DU | 93/95 | 50 | 44 | 2015-2016 |
| Oslo University Hospital ^b , Norway | Lymphoma survivor cohort [8] | PR | 82/Unknown | 51 | 46 | 2007-2009 |
| Oslo University Hospital ^b , Norway | Acute lymphoblastic leukaemia survivor cohort [21] | PR | 103/175 | 82 | 65 | 2009-2010 |
| University hospital Saint-Étienne ^b , France | Rhone Alpe cohort 1 ^c | PR | 120/212 | 120 | 35 | 2005-2013 |
| University hospital Saint-Étienne ^b , France | Rhone Alpe cohort 2 ^c | PR | 220/284 | 102 | 62 | 2015-2016 |
| Edmond and Lily Safra Children's Hospital, Sheba Medical Center ^b , Israel | The Edmond and Lily Safra Children's Hospital Late Effects cohort ^c | DU | 151/239 | 102 | 73 | 2015-2016 |

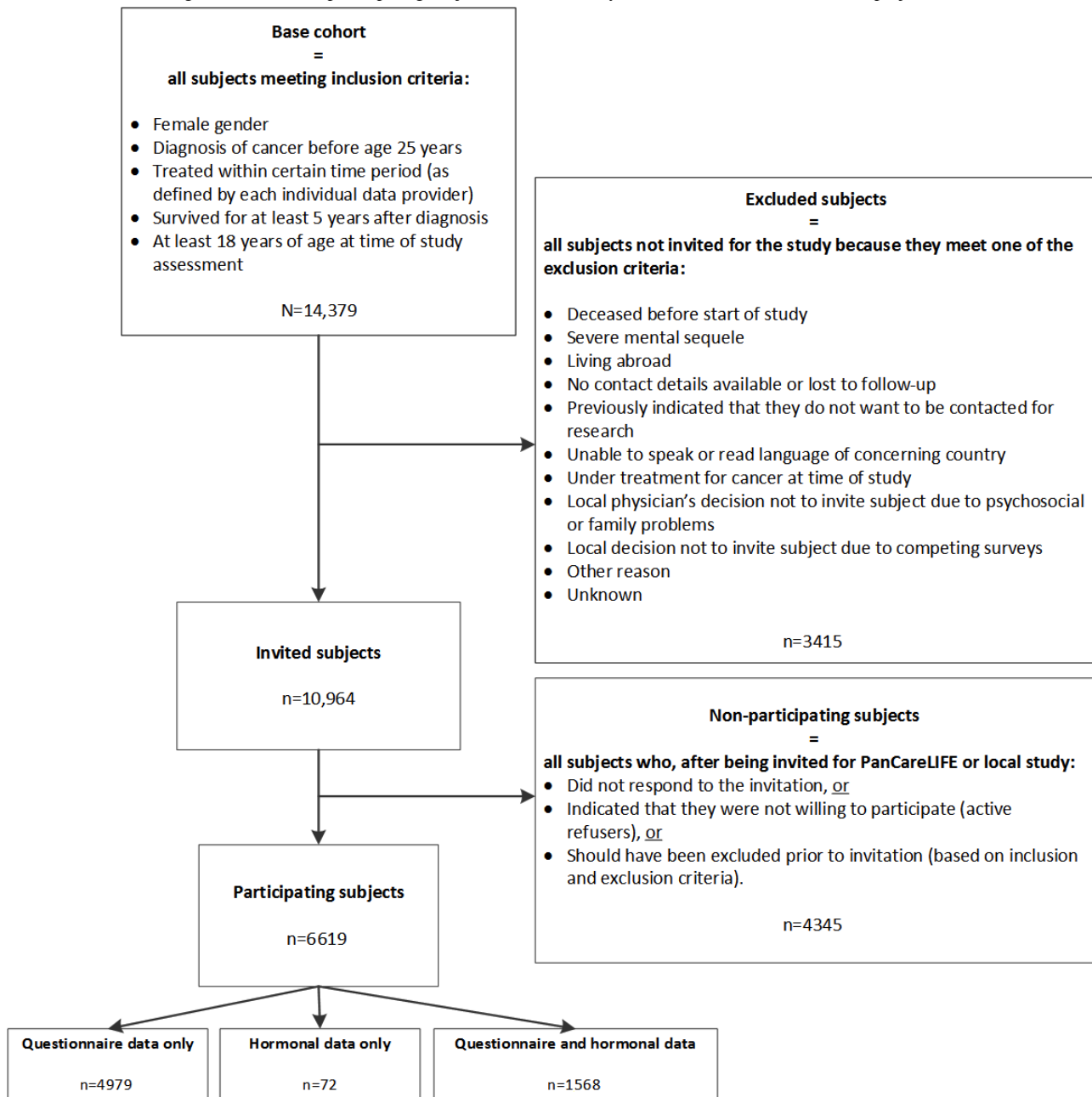
^aBase cohort is the subjects fulfilling inclusion criteria of study.

^bInstitutes participating in the nested case-control study.

^cVarious cancer diagnoses.

^dPR: data collected prior to PanCareLIFE project.

^eDU: data collected during PanCareLIFE project.

Figure 1. Flow chart of eligible, invited, and participating subjects of the 2 fertility studies within the PanCareLIFE project.

Definition of Primary Outcome

The primary outcome of the cohort study is *fertility impairment*. However, given the fact that the fertility data come from different sources, it is difficult to apply one standardized outcome definition of fertility impairment to all participating cohorts in the cohort study. Therefore, fertility impairment is defined according to 8 criteria based on self-reported and hormonal data (criteria 1, 2, and 6), hormonal data only (criterion 3), or on self-reported data only (criteria 4, 5, 7, and 8). These criteria were established by WP3 with a reproductive specialist (C.B. Lambalk). A survivor is classified as being fertility impaired if she meets at least one of the 8 criteria, as described in [Textbox 1](#).

Low AMH is defined as an AMH level $<0.5 \mu\text{g/L}$ [24]. For criteria 1 through 3, AMH is used to validate self-reported

amenorrhea (criteria 1 and 2) or a high FSH level (criterion 3). When AMH levels are used for such validation purposes, levels obtained from serum samples drawn from a participant using any type of hormones are included. However, if only AMH levels are used to decide whether a survivor is fertility impaired or not, like in criterion 6, levels obtained from serum samples drawn during hormonal use are excluded. This is done because previous reports, although inconclusive, have shown that use of contraceptive hormones may significantly decrease AMH levels [25,26]. FSH levels are considered high when they are $>30 \text{ U/L}$ in a serum sample drawn during the midcycle peak (cycle day 12-16), $>15 \text{ U/L}$ in a sample drawn at any other moment during the menstrual cycle in case of amenorrhea, or if the survivor uses hormones at time of serum sampling [27]. When there is no information on the timing of the serum sampling, FSH levels are considered high if they are $>30 \text{ U/L}$.

Textbox 1. Criteria used to define fertility impairment.

- Criterion 1: Primary amenorrhea (never had menses) in combination with a high follicle stimulating hormone (FSH) and/or a low anti-Müllerian hormone (AMH) level.
- Criterion 2: Secondary amenorrhea (no menses for >12 months before the age of 40) in combination with a high FSH and/or a low AMH level.
- Criterion 3: High FSH level in combination with a low AMH level, while being <40 years of age at time of study assessment.
- Criterion 4: Primary amenorrhea (without information on AMH or FSH level).
- Criterion 5: Secondary amenorrhea (without information on AMH or FSH level).
- Criterion 6: Low AMH level and <30 years of age at time of study assessment and not using exogenous reproductive hormones at time of blood sampling.
- Criterion 7: Use of artificial reproductive techniques (excluding those who reported male factor as the single cause of subfertility) and being <40 years of age at time of study assessment.
- Criterion 8: Tried to conceive for at least 12 consecutive months without success and being <40 years of age at time of study assessment.

Planned Data Analyses

The overall prevalence of fertility impairment will be defined as the number of participating survivors who are fertility impaired divided by the total number of participating survivors. The prevalence of fertility impairment will also be calculated for subgroups based on cancer diagnosis, type of treatment (chemotherapy, +/- surgery; radiotherapy, +/- surgery; both chemo- and radiotherapy, +/- surgery; and surgery only), age group at treatment, and calendar period at treatment. In addition, the prevalence of fertility impairment according to each of the different criteria will be calculated along with that of fertility impairment based on the criteria that evaluate ovarian function (criteria 1 to 6) and possible difficulties getting pregnant (criteria 7 and 8).

Multivariable logistic regression analysis will be used to investigate which diagnostic- or treatment-related risk factors influence the probability of being fertility impaired. All analyses will be adjusted for possible confounders, such as age at the time of study assessment, time since diagnosis, smoking status, BMI, and use of hormonal contraception. Furthermore, to detect possible selection bias, descriptive statistics will be used to describe any differences in age at time of study assessment, age at diagnosis, cancer diagnosis, time since diagnosis, and type of treatment between participants, nonparticipants, and excluded women, as seen in [Figure 1](#). All statistical analyses will be performed by investigators of WP3 (AUMC) in close collaboration with the Biostatistical Support Group of both AUMC and University Medical Center Mainz.

The PanCareLIFE Female Fertility Nested Case-Control Study

The case-control study is nested within the cohort study, meaning that both cases and controls are selected from participants of the cohort study. However, only participants from institutions that are able to provide detailed treatment data are potential inclusions for the case-control study. This is the case for participants from 11 out of the 16 cohorts in the cohort study ([Table 1](#)).

The aims of the nested case-control study are to identify specific treatment-related factors associated with an increased risk of fertility impairment among CAYA cancer survivors and investigate possible dose-response relationships between cumulative dose of radiation from radiotherapy, cumulative dose of specific anticancer drugs, and the risk of fertility impairment.

Study Population

The minimal sample size to be included in the nested case-control study population is calculated *a priori*. From a previous study, it was expected that 19% of female childhood cancer survivors exposed to potentially gonadotoxic treatment (ie, the *exposed group*) have low AMH levels compared with 4% among survivors who did not receive such treatment [7]. Based on this information, it is decided to include at least 402 cases and 804 controls (1:2 match), thereby allowing subgroup analyses including up to 6 subgroups (n=67 cases per subgroup). This will enable the detection of an odds ratio of 5.63 with a power of 90% using Fishers' exact test within the subgroups.

Cases are defined as women who are fertility impaired, as assessed by the 8 criteria described in [Textbox 1](#); controls are defined as survivors without fertility impairment (ie, all women who do not meet any of the 8 criteria). Controls were matched to cases on the following criteria: country of treatment, age at time of study assessment (± 1 year), calendar year of treatment (± 3 years), and age at first cancer diagnosis (± 2 years).

Prior to identifying the cases it is estimated that using these 8 criteria, substantially more than the 402 required cases will be identified. Therefore, to include the 402 cases that are most likely to actually be fertility impaired, the decision was made to hierarchically structure these 8 criteria. Moreover, in making this hierarchy, we also considered the certainty by which each criterion can establish whether the remainder of the participants (ie, the *noncases*) are actually *not* fertility impaired (true controls). Criterion 1 is considered to reflect fertility impairment with the highest certainty and criterion 8 with the least, considering the ability of each criterion to also identify "true controls." First, women with self-reported (primary or

secondary) amenorrhea validated by a high FSH and/or a low AMH level are selected as cases, followed by women with an established high FSH level together with a low AMH level. Subsequently, women who reportedly have amenorrhea (primary or secondary) with no further information on AMH levels are selected, followed by those with an established low AMH level while being younger than 30 years and not using any hormones. Finally, women who indicate by self-report to have ever used some type of artificial reproductive technique and subsequently those who have ever tried to become pregnant for at least one year without success are selected as cases. Ultimately, for the nested case-control study, each case is identified as a case based on one criterion only. The process of case accrual ends after 402 cases are selected.

Data Collection

Additional data collected for all selected cases and controls include type, number of cycles, and cumulative doses of each chemotherapeutic agent. For radiotherapy data on site, fractionation schedules and cumulative doses are collected.

Planned Data Analyses

Multivariable regression models will be used to investigate which risk factors are most strongly associated with an increased risk of fertility impairment. For this purpose, the associations with individual chemotherapeutic agents and radiotherapy body

sites and the risk of fertility impairment will be investigated along with the association with cumulative doses of these chemo- and radiotherapy body sites.

Results

The PanCareLIFE Female Fertility Cohort Study

The total base cohort consists of 14,379 female 5-year CAYA cancer survivors, 10,964 of whom are either invited for one of the local fertility studies in the past (n=8500) or for the PanCareLIFE female fertility study (n=2464) (Table 1). In total, data are available from 6619 survivors, either questionnaire-based only (n=4979), hormonal-based only (n=72), or both (n=1568), as seen in Figure 1. Of all questionnaires provided (n=6547), one-quarter (n=1517) consisted of the standardized PanCareLIFE fertility questionnaire. Serum AMH levels have been successfully determined in all 1640 women who provided a blood sample. FSH levels are available from 1242 women.

Table 2 shows the number of women from all participating cohorts who potentially meet each of the criteria for fertility impairment. For some data providers, fertility impairment cannot be assessed by all 8 criteria because not all necessary questionnaire or hormonal data are available for their study population since data were previously collected in local studies.

Table 2. Number of participants in the cohort study who could potentially meet the criteria of fertility impairment by participating cohort.

| Name of study cohort | Criterion 1 (n=1455) | Criterion 2 (n=1566) | Criterion 3 (n=1207) | Criterion 4 (n=3133) | Criterion 5 (n=5861) | Criterion 6 (n=1640) | Criterion 7 (n=2759) | Criterion 8 (n=5050) |
|---|-------------------------|-------------------------|-------------------------|-------------------------|-------------------------|-------------------------|-------------------------|-------------------------|
| DCOG LATER cohort | 615 | 615 | 614 | 1109 | 1109 | 619 | 1109 | 0 |
| Hodgkin Lymphoma cohort | 0 | 0 | 0 | 203 | 203 | 0 | 0 | 0 |
| VIVE cohort | 0 | 0 | 0 | 0 | 2482 | 0 | 0 | 2482 |
| Ewing 2008 Clinical Trials cohort | 22 | 22 | 2 | 46 | 46 | 24 | 46 | 46 |
| Berlin Hormone Analyses cohort | 69 | 69 | 69 | 83 | 83 | 69 | 0 | 0 |
| Cohort female 5-y cancer survivors Brno | 180 | 180 | 85 | 182 | 182 | 180 | 182 | 182 |
| Cohort female 5-y cancer survivors Motle | 236 | 236 | 198 | 574 | 574 | 301 | 574 | 574 |
| Swiss Childhood Cancer Registry cohort 1 | 0 | 0 | 0 | 0 | 0 | 0 | 0 | 685 |
| Swiss Childhood Cancer Registry cohort 2 | 0 | 0 | 0 | 0 | 113 | 0 | 0 | 113 |
| Lymphoma survivor cohort | 0 | 46 | 36 | 0 | 51 | 46 | 51 | 51 |
| Acute lymphoblastic leukemia survivor cohort | 0 | 65 | 10 | 0 | 82 | 65 | 82 | 82 |
| Rhone Alpe cohort 1 | 35 | 35 | 9 | 120 | 120 | 35 | 0 | 120 |
| Rhone Alpe cohort 2 | 62 | 62 | 0 | 101 | 101 | 62 | 0 | 0 |
| Gaslini female survivors cohort | 122 | 122 | 109 | 563 | 563 | 122 | 563 | 563 |
| Hematopoietic stem cell transplantation cohort | 42 | 42 | 40 | 50 | 50 | 44 | 50 | 50 |
| The Edmond and Lily Safra Children's Hospital Late Effects cohort | 72 | 72 | 35 | 102 | 102 | 73 | 102 | 102 |

Table 3. Number of cases and controls identified within study cohorts included in the nested case-control study.

| Institute | Study cohort | Cases identified (n=450) | Number of controls matched | |
|--|---|--------------------------|--|---|
| | | | Controls identified within same cohort (n=801) | Controls identified within DCOG LATER cohort (n=81) |
| DCOG LATER | DCOG LATER cohort | 120 | 238 | N/A ^a |
| Westfaelische Wilhelms-Universitaet Muenster | Ewing 2008 Clinical Trials cohort | 8 | 15 | 0 |
| Fakultni Nemocnice Brno | Cohort malignant cancer survivors Brno | 17 | 30 | 3 |
| Fakultni Nemocnice v Motol | Cohort malignant cancer survivors Motol | 128 | 232 | 19 |
| Istituto Giannina Gaslini | Gasline female survivors cohort | 91 | 179 | 2 |
| Great Ormond Street Children's Hospital and University College London Hospital | Hematopoietic stem cell transplantation cohort | 28 | 6 | 43 |
| Oslo University Hospital | Lymphoma survivor cohort and Acute lymphoblastic leukemia survivor cohort | 18 | 24 | 12 |
| University hospital Saint-Étienne | Rhone Alpe cohort 1 and Rhone Alpe cohort 2 | 28 | 56 | 0 |
| Edmond and Lily Safra Children's Hospital, Sheba Medical Center | The Edmond and Lily Safra Children's Hospital Late Effects cohort | 12 | 21 | 2 |

^aN/A: Not applicable.

Results show that within the total group of 6619 participants, criterion 1 could be evaluated among 21.98% (1455/6619) of the participants, criterion 2 among 23.66% (1566/6619), criterion 3 among 18.24% (1207/6619), criterion 4 among 47.33% (3133/6619), criterion 5 among 88.55% (5861/6619), criterion 6 among 24.78% (1640/6619), criterion 7 among 41.68% (2759/6619), and criterion 8 among 76.30% (5050/6619) of the participants. However, data providers who collect their data during the course of PanCareLIFE collect data for all 8 criteria. This results in a total group of 464 participants for whom all 8 criteria can successfully be evaluated.

All data are collected and entered into local electronic databases by data providers and sent to the coordinating data center in Mainz (WP1). These data are subsequently checked, merged, and cleaned by investigators from WP1 after which a final, aggregated dataset is sent to the investigators of WP3.

The PanCareLIFE Female Fertility Nested Case-Control Study

The selection of cases and controls has been successfully performed using the hierarchically-ordered criteria of fertility impairment. However, ultimately, it appears that this hierarchy can be discarded since, after the application of the 8th criterion, a total of 504 cases have been identified from the total eligible cohort. Of these, 13 cases are excluded, because no treatment data are available, and 41 because no appropriate matching controls can be found. Therefore, ultimately, 450 cases are included in the case-control study. If the cases identified by the last criterion (criterion 8) are not included in the nested

case-cohort study, this will lead to fewer than the required 402 cases.

The 450 selected cases are matched to 882 controls. Some cohort cases cannot be matched to 2 controls owing to an insufficient number of controls in that cohort. However, because the Dutch Childhood Oncology Group - Long term Effects after Childhood Cancer cohort (see Table 1) includes more eligible controls than required, this cohort was used as a “back-up” control selection cohort [17]. In total, 9% (81/882) matched controls are selected from this cohort (Table 3). Overall, 2 matching controls are found for 432 cases, whereas for 18 cases, only one matching control could be identified. After the selection of cases and controls has been finalized, data providers are provided with a list of survivors in their cohort for whom they have to collect detailed treatment data.

Data analysis of both the PanCareLIFE cohort study and the case-control study is currently under way and the first results are expected to be submitted for publication in 2019.

Discussion

This paper describes the design and methods of 2 studies on female fertility within the PanCareLIFE project. Due to the large number of institutions collaborating within this project, these studies will encompass the largest group of CAYA cancer survivors among whom female fertility is investigated using both self-reported and hormonal data. Results will provide detailed insight into the prevalence of fertility impairment following CAYA cancer and the diagnostic- or treatment-related factors associated with an increased risk of fertility impairment.

This will help clinicians to adequately counsel both girls or young women who are about to start anticancer treatments as well as adult female CAYA cancer survivors about issues concerning their remaining reproductive life span and the possible need for fertility preservation interventions. Moreover, knowledge gained from the 2 studies can be incorporated into existing evidence-based clinical guidelines on female fertility for CAYA cancer patients and survivors [28,29].

The 2 fertility studies conducted within PanCareLIFE have several strengths. First, the international collaboration, as achieved in PanCareLIFE, has resulted in an unprecedented number of female CAYA cancer survivors for whom data on fertility impairment are available. Large study populations are essential to achieve statistically and clinically meaningful results. Moreover, the large sample size in the PanCareLIFE fertility studies will allow many subgroup analyses. For these analyses, survivors whose former treatment is presumed not to negatively affect fertility (as indicated by the literature available at time of data analyses) can serve as the reference group when calculating effect measures, such as relative risks or odds ratios. Second, within both PanCareLIFE fertility studies, a broad definition of fertility impairment has been employed using several criteria that have frequently been used in previous studies assessing fertility in female CAYA cancer survivors [11,12,30-33]. By doing so, a large set of data, as provided by the data providers, who collected their data prior to the PanCareLIFE project, could be incorporated into the PanCareLIFE fertility studies. Moreover, using a broad definition of fertility impairment will enable calculation of an overall prevalence of fertility impairment and the calculation of the specific criterion-specific prevalence of fertility impairment. Each criterion-specific prevalence can then be compared with those reported in previous studies among CAYA cancer survivors, which used the same definition (ie, criterion) for fertility impairment. Third, some criteria of fertility impairment employed within PanCareLIFE included self-reported outcomes that are validated by hormonal values. Attempts to endorse questionnaire-based fertility data by comparing them with objective hormonal markers is important because it is known that self-reported fertility data, especially on menstrual cycle regularities, have limited association with objective clinical markers [34].

For the cohort study, survivors are considered *fertility impaired* when they meet at least one of 8 criteria. For the nested case-control study, however, a hierarchy is applied to these criteria, meaning that a survivor is defined as a case based on the criterion that established fertility impairment with the presumed highest level of certainty, considering the ability of this criterion to also identify “true controls” (ie, survivors who are definitely *not* fertility impaired based on that criterion by the end of follow-up). The hierarchy applied to the 8 criteria is based on several considerations. Criteria 1 through 3 (primary or secondary amenorrhea combined with a high FSH and/or a low AMH and high FSH combined with a low AMH) are deemed strong indicators of fertility impairment because one marker of (in)fertility (amenorrhea and high FSH, respectively) is validated by another marker (ie, AMH). AMH is currently considered the marker of choice when it comes to measuring

ovarian reserve because it seems to be the most stable marker, it is randomly measurable throughout the menstrual cycle and it seems to reflect reduced ovarian function early in the sequence of events leading to menopause [35,36]. Criteria 4 and 5 also include the outcome amenorrhea; however, in the cases of these criteria, it is not validated by FSH or AMH values, making them less certain criteria for fertility impairment because amenorrhea may also be caused by factors other than ovarian follicle depletion [37]. Women less than 30 years of age with an AMH level below $<0.5 \mu\text{g/L}$ (criterion 6) are also considered to be fertility impaired [38]. However, because hormonal contraception use has shown to significantly decrease AMH levels [25], this criterion is evaluated among the nonhormone users only. The final 2 criteria include self-reported measures regarding pregnancy attempts (use of artificial reproductive techniques and unsuccessful pregnancy attempts for at least 12 months, respectively). Both criteria have proven to be good indicators of sub- or infertility [39,40]. They are, however, at the bottom of the hierarchy because they only apply to the subgroup of survivors who have already tried to become pregnant. Consequently, these criteria do not provide any information regarding fertility impairment in those who have not yet attempted to conceive at time of study assessment, as was true for a substantial portion (approximately two-thirds) of the included survivor population. By placing criteria 1 through 6 before 7 and 8, the number of women who are categorized as being fertility impaired based on the criteria that provide information on fertility impairment in the whole cohort, and not just in those who have attempted to become pregnant, is maximized. Moreover, it enables us to easily differentiate between fertility impairment rates of survivors based on all 8 criteria versus criteria 1 through 6 only.

The fertility studies within PanCareLIFE have some limitations. First, due to missing information, some of the data on fertility impairment collected in previous local studies cannot be successfully recoded to make them compatible with the data that are collected with the PanCareLIFE questionnaire. As a consequence, data from some cohorts cannot be considered when calculating the overall prevalence of fertility impairment. Second, our studies may be subject to selection bias because from about 60% of the total invited group of subjects' outcome data from are available for the cohort study and even less for the nested case-control study. This could impact the generalizability of our study results. To estimate the risk of selection bias, participants will be compared with nonparticipants relative to age at time of study assessment and disease-related characteristics. Third, no information is available on the fertility outcomes of women treated for CAYA cancer who died before the study (after having survived for at least 5 years). Because many of these women might have been treated with relatively high (gonado)toxic treatment regimens, they would most probably have met at least one of the 8 criteria of fertility impairment, were they still living. As a consequence, the risk of fertility impairment calculated based on this study results might be an underestimation of the “true” risk. Furthermore, for some (sub)cohorts, not all self-reported or hormonal data needed to evaluate each of the 8 criteria are available, because these data were not collected during the local fertility study in the past. As a result, survivors within certain

cohorts can be evaluated by one or 2 criteria only. Hypothetically, these women could also have met one of the other criteria. However, because data for these other criteria are lacking, this group of women might be misclassified (ie, categorized as being *not fertility impaired*, whereas in reality, they are), also possibly leading to an underestimation of the overall prevalence of fertility impairment. For future studies, it is of high importance that researchers achieve consensus concerning the assessment of fertility impairment among female CAYA cancer survivors in late effects studies.

In summary, the 2 fertility studies conducted within PanCareLIFE will generate evidence-based knowledge

concerning risk factors for impaired fertility among female CAYA cancer survivors as well as valuable information regarding differences in the prevalence of fertility impairment using different criteria to define this impairment. These results will enhance clinical practice because they will help health care practitioners provide adequate counseling concerning future parenthood to CAYA cancer survivors as well as new patients and refer these individuals to a reproductive specialist for fertility preservation in a timely manner. The ultimate objective is to empower patients and survivors and improve their quality of life.

Acknowledgments

We gratefully thank all the patients and survivors who provided their data for research and for PanCareLIFE. This project received funding from the European Union's Seventh Framework Programme for research, technological development and demonstration under grant agreement number 602030.

Authors' Contributions

PanCareLIFE (Grant Agreement no. 602030) is a collaborative project in the 7th Framework Programme of the European Union. Project partners are: Universitätsmedizin der Johannes Gutenberg-Universität Mainz, Germany (PD Dr P Kaatsch, Dr D Grabow), Boyne Research Institute, Drogheda, Ireland (Dr J Byrne, Ms H Campbell), Pintail Ltd, Dublin, Ireland (Mr C Clissmann, Dr K O'Brien), Academisch Medisch Centrum bij de Universiteit van Amsterdam, Netherlands (Dr LCM Kremer), Universität zu Lübeck, Germany (Professor T Langer), Stichting VU-VUMC, Amsterdam, Netherlands (Dr E van Dulmen-den Broeder, Dr MH van den Berg), Erasmus Universitair Medisch Centrum Rotterdam, Netherlands (Dr MM van den Heuvel-Eibrink), Charité-Universitätsmedizin Berlin, Germany (PD Dr A Borgmann-Staudt), Westfälische Wilhelms-Universität Münster, Germany (Professor A am Zehnhoff-Dinnesen), Universität Bern, Switzerland (Professor CE Kuehni), Istituto Giannina Gaslini, Genoa, Italy (Dr R Haupt, Dr Monica Muraca), Fakultni nemocnice Brno, Czech Republic (Dr T Kepak), International Clinical Research Center (FNUSA-ICRC) (Dr T Kepak), Centre Hospitalier Universitaire Saint Etienne-CHU, Saint Etienne, France (Dr C Berger), Kraeftens Bekaempelse, Copenhagen, Denmark (Dr JF Winther), Fakultni nemocnice v Motol, Prague, Czech Republic (Dr J Kruseova) and Universitaetsklinikum Bonn, Bonn, Germany (Dr G Calaminus, Dr K Baust). Data are provided by: Academisch Medisch Centrum bij de Universiteit van Amsterdam, on behalf of the DCOG LATER Study centres, Netherlands (Dr LCM Kremer), Stichting VU-VUMC, Amsterdam, Netherlands (Dr E van Dulmen-den Broeder, Dr MH van den Berg), Erasmus Universitair Medisch Centrum Rotterdam, Netherlands (Dr MM van den Heuvel-Eibrink), Prinses Maxima Centrum (Dr MM van den Heuvel-Eibrink), Netherlands Cancer Institute (Professor F van Leeuwen), Charité-Universitätsmedizin Berlin, Germany (PD Dr. A Borgmann-Staudt, Dr G Strauß), Westfälische Wilhelms-Universität Münster, Germany (Professor A am Zehnhoff-Dinnesen, Professor U Dirksen), Universität Bern, Switzerland (Professor CE Kuehni), Istituto Giannina Gaslini, Genoa, Italy (Dr R Haupt, Dr Monica Muraca, Dr M-L Garré), Fakultni nemocnice Brno, Czech Republic (Dr T Kepak), International Clinical Research Center (FNUSA-ICRC) (Dr T Kepak), Centre Hospitalier Universitaire Saint Etienne, France (Dr C Berger), Kraeftens Bekaempelse, Copenhagen, Denmark (Dr JF Winther), Fakultni nemocnice v Motol, Prague, Czech Republic (Dr J Kruseova), Universitetet i Oslo, Norway (Professor S Fosså), Great Ormond Street Hospital (Dr A Leiper), Medizinische Universität Graz, Austria (Professor H Lackner), St Anna Kinderspital, Vienna, Austria (Dr L Kager), Uniwersytet Medyczny w Białymstoku, Białystok, Poland (Dr A Panasiuk, Dr M Krawczuk-Rybak), Heinrich Heine Universität Düsseldorf, Germany (Dr M Kunstreich, Dr A Borkhardt), Universität Ulm, Germany (Dr H Cario, Professor O Zolk), Universität zu Lübeck, Germany (Professor T Langer), Klinikum Stuttgart, Olgahospital, Stuttgart, Germany (Professor S Bielack), Uniwersytet Gdąnski, Poland (Professor J Stefanowicz), University College London Hospital, UK (Dr V Grandage), Sheba Medical Center Hospital, Tel Aviv, Israel (Dr D Modan-Moses) and Universitaetsklinikum Bonn, Bonn, Germany (Dr G Calaminus).

Conflicts of Interest

None declared.

Multimedia Appendix 1

Expanded version of [Table 1](#) (characteristics of cohorts included in the cohort study and the nested case-control study).

[\[PDF File \(Adobe PDF File\), 72KB-Multimedia Appendix 1\]](#)

Multimedia Appendix 2

Flow of data collected for the two fertility studies within PanCareLIFE project.

[\[PNG File, 52KB-Multimedia Appendix 2\]](#)

References

1. Gatta G, Botta L, Rossi S, Aareleid T, Bielska-Lasota M, Clavel J, EURO CARE Working Group. Childhood cancer survival in Europe 1999-2007: results of EURO CARE-5--a population-based study. *Lancet Oncol* 2014 Jan;15(1):35-47. [doi: [10.1016/S1470-2045\(13\)70548-5](https://doi.org/10.1016/S1470-2045(13)70548-5)] [Medline: [24314616](https://pubmed.ncbi.nlm.nih.gov/24314616/)]
2. Antal Z, Sklar CA. Gonadal Function and Fertility Among Survivors of Childhood Cancer. *Endocrinol Metab Clin North Am* 2015 Dec;44(4):739-749. [doi: [10.1016/j.ecl.2015.08.002](https://doi.org/10.1016/j.ecl.2015.08.002)] [Medline: [26568489](https://pubmed.ncbi.nlm.nih.gov/26568489/)]
3. Reinmuth S, Hohmann C, Rendtorff R, Balcerek M, Holzhausen S, Müller A, et al. Impact of chemotherapy and radiotherapy in childhood on fertility in adulthood: the FeCt-survey of childhood cancer survivors in Germany. *J Cancer Res Clin Oncol* 2013 Dec;139(12):2071-2078. [doi: [10.1007/s00432-013-1527-9](https://doi.org/10.1007/s00432-013-1527-9)] [Medline: [24085598](https://pubmed.ncbi.nlm.nih.gov/24085598/)]
4. Langeveld NE, Grootenhuis MA, Voûte PA, de Haan RJ, van den Bos C. Quality of life, self-esteem and worries in young adult survivors of childhood cancer. *Psychooncology* 2004 Dec;13(12):867-881. [doi: [10.1002/pon.800](https://doi.org/10.1002/pon.800)] [Medline: [15386796](https://pubmed.ncbi.nlm.nih.gov/15386796/)]
5. Overbeek A, van den Berg M, van Leeuwen F, Kaspers G, Lambalk C, van Dulmen-den Broeder E. Chemotherapy-related late adverse effects on ovarian function in female survivors of childhood and young adult cancer: A systematic review. *Cancer Treat Rev* 2017 Feb;53:10-24. [doi: [10.1016/j.ctrv.2016.11.006](https://doi.org/10.1016/j.ctrv.2016.11.006)] [Medline: [28056411](https://pubmed.ncbi.nlm.nih.gov/28056411/)]
6. Thomas-Teinturier C, Allodji RS, Svetlova E, Frey M, Oberlin O, Millischer A, et al. Ovarian reserve after treatment with alkylating agents during childhood. *Hum Reprod* 2015 Jun;30(6):1437-1446. [doi: [10.1093/humrep/dev060](https://doi.org/10.1093/humrep/dev060)] [Medline: [25801499](https://pubmed.ncbi.nlm.nih.gov/25801499/)]
7. van den Berg MH, Overbeek A, Lambalk C, Kaspers GD, Bresters D, van den Heuvel-Eibrink MM, DCOG LATER-VEVO study group. Long-term effects of childhood cancer treatment on hormonal and ultrasound markers of ovarian reserve. *Hum Reprod* 2018 Jul 06. [doi: [10.1093/humrep/dey229](https://doi.org/10.1093/humrep/dey229)] [Medline: [29982673](https://pubmed.ncbi.nlm.nih.gov/29982673/)]
8. Hamre H, Kiserud C, Ruud E, Thorsby P, Fosså SD. Gonadal function and parenthood 20 years after treatment for childhood lymphoma: a cross-sectional study. *Pediatr Blood Cancer* 2012 Aug;59(2):271-277. [doi: [10.1002/pbc.23363](https://doi.org/10.1002/pbc.23363)] [Medline: [22021108](https://pubmed.ncbi.nlm.nih.gov/22021108/)]
9. Larsen EC, Müller J, Schmiegelow K, Rechnitzer C, Andersen AN. Reduced ovarian function in long-term survivors of radiation- and chemotherapy-treated childhood cancer. *J Clin Endocrinol Metab* 2003 Nov;88(11):5307-5314. [doi: [10.1210/jc.2003-030352](https://doi.org/10.1210/jc.2003-030352)] [Medline: [14602766](https://pubmed.ncbi.nlm.nih.gov/14602766/)]
10. Armuand G, Skoog-Svanberg A, Bladh M, Sydsjö G. Reproductive Patterns Among Childhood and Adolescent Cancer Survivors in Sweden: A Population-Based Matched-Cohort Study. *J Clin Oncol* 2017 May 10;35(14):1577-1583. [doi: [10.1200/JCO.2016.71.0582](https://doi.org/10.1200/JCO.2016.71.0582)] [Medline: [28350518](https://pubmed.ncbi.nlm.nih.gov/28350518/)]
11. Green DM, Sklar CA, Boice JD, Mulvihill JJ, Whitton JA, Stovall M, et al. Ovarian failure and reproductive outcomes after childhood cancer treatment: results from the Childhood Cancer Survivor Study. *J Clin Oncol* 2009 May 10;27(14):2374-2381 [FREE Full text] [doi: [10.1200/JCO.2008.21.1839](https://doi.org/10.1200/JCO.2008.21.1839)] [Medline: [19364956](https://pubmed.ncbi.nlm.nih.gov/19364956/)]
12. Barton S, Najita J, Ginsburg E, Leisenring W, Stovall M, Weathers R, et al. Infertility, infertility treatment, and achievement of pregnancy in female survivors of childhood cancer: a report from the Childhood Cancer Survivor Study cohort. *Lancet Oncol* 2013 Aug;14(9):873-881 [FREE Full text] [doi: [10.1016/S1470-2045\(13\)70251-1](https://doi.org/10.1016/S1470-2045(13)70251-1)] [Medline: [23856401](https://pubmed.ncbi.nlm.nih.gov/23856401/)]
13. Johnston RJ, Wallace WHB. Normal ovarian function and assessment of ovarian reserve in the survivor of childhood cancer. *Pediatr Blood Cancer* 2009 Aug;53(2):296-302. [doi: [10.1002/pbc.22012](https://doi.org/10.1002/pbc.22012)] [Medline: [19514070](https://pubmed.ncbi.nlm.nih.gov/19514070/)]
14. Practice Committee of the American Society for Reproductive Medicine. Testing and interpreting measures of ovarian reserve: a committee opinion. *Fertil Steril* 2015 Mar;103(3):e9-e17. [doi: [10.1016/j.fertnstert.2014.12.093](https://doi.org/10.1016/j.fertnstert.2014.12.093)] [Medline: [25585505](https://pubmed.ncbi.nlm.nih.gov/25585505/)]
15. van Dijk M, van den Berg M, Overbeek A, Lambalk C, van den Heuvel-Eibrink M, Tissing W, DCOG LATER-VEVO study group. Reproductive intentions and use of reproductive health care among female survivors of childhood cancer. *Hum Reprod* 2018 Jun 01;33(6):1167-1174. [doi: [10.1093/humrep/dey058](https://doi.org/10.1093/humrep/dey058)] [Medline: [29617794](https://pubmed.ncbi.nlm.nih.gov/29617794/)]
16. PanCareLIFE - Life After Childhood Cancer. Accessed 20 Novmeber 2017 URL: <http://www.pancarelife.eu/> [accessed 2018-07-27] [WebCite Cache ID 71DlqEgNQ]
17. Overbeek A, van den Berg MH, Kremer LC, van den Heuvel-Eibrink MM, Tissing WJE, Loonen JJ, DCOG LATER-VEVO study group. A nationwide study on reproductive function, ovarian reserve, and risk of premature menopause in female survivors of childhood cancer: design and methodological challenges. *BMC Cancer* 2012 Aug 23;12:363 [FREE Full text] [doi: [10.1186/1471-2407-12-363](https://doi.org/10.1186/1471-2407-12-363)] [Medline: [22917040](https://pubmed.ncbi.nlm.nih.gov/22917040/)]
18. Kuehni CE, Rueegg CS, Michel G, Rebholz CE, Strippoli MF, Niggli FK, Swiss Paediatric Oncology Group (SPOG). Cohort profile: the Swiss childhood cancer survivor study. *Int J Epidemiol* 2012 Dec;41(6):1553-1564. [doi: [10.1093/ije/dyr142](https://doi.org/10.1093/ije/dyr142)] [Medline: [22736394](https://pubmed.ncbi.nlm.nih.gov/22736394/)]

19. Krul IM, Opstal-van Winden AWJ, Aleman BMP, Janus CPM, van Eggermond AM, De Bruin ML, et al. Breast Cancer Risk After Radiation Therapy for Hodgkin Lymphoma: Influence of Gonadal Hormone Exposure. *Int J Radiat Oncol Biol Phys* 2017 Dec 15;99(4):843-853. [doi: [10.1016/j.ijrobp.2017.07.016](https://doi.org/10.1016/j.ijrobp.2017.07.016)] [Medline: [28888722](https://pubmed.ncbi.nlm.nih.gov/28888722/)]
20. De Bruin ML, Huisbrink J, Hauptmann M, Kuenen MA, Ouwens GM, van't Veer MB, et al. Treatment-related risk factors for premature menopause following Hodgkin lymphoma. *Blood* 2008 Jan 01;111(1):101-108 [FREE Full text] [doi: [10.1182/blood-2007-05-090225](https://doi.org/10.1182/blood-2007-05-090225)] [Medline: [17890454](https://pubmed.ncbi.nlm.nih.gov/17890454/)]
21. Kanellopoulos A, Andersson S, Zeller B, Tamnes CK, Fjell AM, Walhovd KB, et al. Neurocognitive Outcome in Very Long-Term Survivors of Childhood Acute Lymphoblastic Leukemia After Treatment with Chemotherapy Only. *Pediatr Blood Cancer* 2016 Jan;63(1):133-138. [doi: [10.1002/pbc.25690](https://doi.org/10.1002/pbc.25690)] [Medline: [26312396](https://pubmed.ncbi.nlm.nih.gov/26312396/)]
22. Steliarova-Foucher E, Stiller C, Lacour B, Kaatsch P. International Classification of Childhood Cancer, third edition. *Cancer* 2005 Apr 01;103(7):1457-1467 [FREE Full text] [doi: [10.1002/cncr.20910](https://doi.org/10.1002/cncr.20910)] [Medline: [15712273](https://pubmed.ncbi.nlm.nih.gov/15712273/)]
23. Gassner D, Jung R. First fully automated immunoassay for anti-Müllerian hormone. *Clin Chem Lab Med* 2014 Aug;52(8):1143-1152. [doi: [10.1515/cclm-2014-0022](https://doi.org/10.1515/cclm-2014-0022)] [Medline: [24622790](https://pubmed.ncbi.nlm.nih.gov/24622790/)]
24. Anckaert E, Öktem M, Thies A, Cohen-Bacrie M, Daan NMP, Schiettecatte J, et al. Multicenter analytical performance evaluation of a fully automated anti-Müllerian hormone assay and reference interval determination. *Clin Biochem* 2016 Feb;49(3):260-267 [FREE Full text] [doi: [10.1016/j.clinbiochem.2015.10.008](https://doi.org/10.1016/j.clinbiochem.2015.10.008)] [Medline: [26500002](https://pubmed.ncbi.nlm.nih.gov/26500002/)]
25. van den Berg MH, van Dulmen-den BE, Overbeek A, Twisk JWR, Schats R, van Leeuwen FE, et al. Comparison of ovarian function markers in users of hormonal contraceptives during the hormone-free interval and subsequent natural early follicular phases. *Hum Reprod* 2010 Jun;25(6):1520-1527. [doi: [10.1093/humrep/deq071](https://doi.org/10.1093/humrep/deq071)] [Medline: [20348556](https://pubmed.ncbi.nlm.nih.gov/20348556/)]
26. Birch PK, Hvidman HW, Forman JL, Pinborg A, Larsen EC, Macklon KT, et al. Ovarian reserve assessment in users of oral contraception seeking fertility advice on their reproductive lifespan. *Hum Reprod* 2015 Oct;30(10):2364-2375. [doi: [10.1093/humrep/dev197](https://doi.org/10.1093/humrep/dev197)] [Medline: [26311148](https://pubmed.ncbi.nlm.nih.gov/26311148/)]
27. de Koning CH, McDonnell J, Themmen AP, de Jong FH, Homburg R, Lambalk CB. The endocrine and follicular growth dynamics throughout the menstrual cycle in women with consistently or variably elevated early follicular phase FSH compared with controls. *Hum Reprod* 2008 Jun;23(6):1416-1423. [doi: [10.1093/humrep/den092](https://doi.org/10.1093/humrep/den092)] [Medline: [18375407](https://pubmed.ncbi.nlm.nih.gov/18375407/)]
28. van Dorp W, Mulder R, Kremer L, Hudson M, van den Heuvel-Eibrink M, van DBM, et al. Recommendations for Premature Ovarian Insufficiency Surveillance for Female Survivors of Childhood, Adolescent, and Young Adult Cancer: A Report From the International Late Effects of Childhood Cancer Guideline Harmonization Group in Collaboration With the PanCareSurFup Consortium. *J Clin Oncol* 2016 Oct 01;34(28):3440-3450 [FREE Full text] [doi: [10.1200/JCO.2015.64.3288](https://doi.org/10.1200/JCO.2015.64.3288)] [Medline: [27458300](https://pubmed.ncbi.nlm.nih.gov/27458300/)]
29. Metzger ML, Meacham LR, Patterson B, Casillas JS, Constine LS, Hijiya N, et al. Female reproductive health after childhood, adolescent, and young adult cancers: guidelines for the assessment and management of female reproductive complications. *J Clin Oncol* 2013 Mar 20;31(9):1239-1247 [FREE Full text] [doi: [10.1200/JCO.2012.43.5511](https://doi.org/10.1200/JCO.2012.43.5511)] [Medline: [23382474](https://pubmed.ncbi.nlm.nih.gov/23382474/)]
30. Green D, Kawashima T, Stovall M, Leisenring W, Sklar C, Mertens A, et al. Fertility of female survivors of childhood cancer: a report from the childhood cancer survivor study. *J Clin Oncol* 2009 Jun 01;27(16):2677-2685 [FREE Full text] [doi: [10.1200/JCO.2008.20.1541](https://doi.org/10.1200/JCO.2008.20.1541)] [Medline: [19364965](https://pubmed.ncbi.nlm.nih.gov/19364965/)]
31. Chemaitilly W, Li Z, Krasin M, Brooke R, Wilson C, Green D, et al. Premature Ovarian Insufficiency in Childhood Cancer Survivors: A Report From the St. Jude Lifetime Cohort. *J Clin Endocrinol Metab* 2017 Dec 01;102(7):2242-2250 [FREE Full text] [doi: [10.1210/jc.2016-3723](https://doi.org/10.1210/jc.2016-3723)] [Medline: [28368472](https://pubmed.ncbi.nlm.nih.gov/28368472/)]
32. Thomas-Teinturier C, El FC, Oberlin O, Pacquement H, Haddy N, Labbé M, et al. Age at menopause and its influencing factors in a cohort of survivors of childhood cancer: earlier but rarely premature. *Hum Reprod* 2013 Feb;28(2):488-495. [doi: [10.1093/humrep/des391](https://doi.org/10.1093/humrep/des391)] [Medline: [23154067](https://pubmed.ncbi.nlm.nih.gov/23154067/)]
33. Sudour H, Chastagner P, Claude L, Desandes E, Klein M, Carrie C, et al. Fertility and pregnancy outcome after abdominal irradiation that included or excluded the pelvis in childhood tumor survivors. *Int J Radiat Oncol Biol Phys* 2010 Mar 01;76(3):867-873. [doi: [10.1016/j.ijrobp.2009.04.012](https://doi.org/10.1016/j.ijrobp.2009.04.012)] [Medline: [19632060](https://pubmed.ncbi.nlm.nih.gov/19632060/)]
34. Jantke A, Rendtorff R, Dittrich R, Müller A, Pfitzer C, Hohmann C, et al. Association between self-reported questionnaire data on fertility and results of hormone analyses in women after childhood cancer: a cross-sectional study. *J Obstet Gynaecol Res* 2012 Oct;38(10):1254-1259. [doi: [10.1111/j.1447-0756.2012.01861.x](https://doi.org/10.1111/j.1447-0756.2012.01861.x)] [Medline: [22563903](https://pubmed.ncbi.nlm.nih.gov/22563903/)]
35. Iliodromiti S, Anderson RA, Nelson SM. Technical and performance characteristics of anti-Müllerian hormone and antral follicle count as biomarkers of ovarian response. *Hum Reprod Update* 2015;21(6):698-710. [doi: [10.1093/humupd/dmu062](https://doi.org/10.1093/humupd/dmu062)] [Medline: [25489055](https://pubmed.ncbi.nlm.nih.gov/25489055/)]
36. La MA, Grisendi V, Griesinger G. How Much Does AMH Really Vary in Normal Women? *Int J Endocrinol* 2013;2013:959487 [FREE Full text] [doi: [10.1155/2013/959487](https://doi.org/10.1155/2013/959487)] [Medline: [24348558](https://pubmed.ncbi.nlm.nih.gov/24348558/)]
37. Master-Hunter T, Heiman D. Amenorrhea: evaluation and treatment. *Am Fam Physician* 2006 Apr 15;73(8):1374-1382 [FREE Full text] [Medline: [16669559](https://pubmed.ncbi.nlm.nih.gov/16669559/)]
38. Kelsey TW, Wright P, Nelson SM, Anderson RA, Wallace WHB. A validated model of serum anti-müllerian hormone from conception to menopause. *PLoS One* 2011;6(7):e22024 [FREE Full text] [doi: [10.1371/journal.pone.0022024](https://doi.org/10.1371/journal.pone.0022024)] [Medline: [21789206](https://pubmed.ncbi.nlm.nih.gov/21789206/)]

39. Gnoth C, Godehardt D, Godehardt E, Frank-Herrmann P, Freundl G. Time to pregnancy: results of the German prospective study and impact on the management of infertility. *Hum Reprod* 2003 Sep;18(9):1959-1966. [Medline: [12923157](#)]
40. Moreau C, Bouyer J, Ducot B, Spira A, Slama R. When do involuntarily infertile couples choose to seek medical help? *Fertil Steril* 2010 Feb;93(3):737-744. [doi: [10.1016/j.fertnstert.2008.10.011](#)] [Medline: [19022434](#)]

Abbreviations

AMH: anti-Müllerian hormone
AUMC: Amsterdam UMC, Vrije Universiteit
CAYA: childhood, adolescent, and young adult
FSH: follicle stimulating hormone
WP: work package

Edited by G Eysenbach; submitted 19.04.18; peer-reviewed by R Peris-Bonet, Y Motoki; comments to author 06.06.18; accepted 19.06.18; published 14.09.18

Please cite as:

van den Berg M, van Dijk M, Byrne J, Campbell H, Berger C, Borgmann-Staudt A, Calaminus G, Dirksen U, Winther JF, Fossa SD, Grabow D, Grandage VL, van den Heuvel-Eibrink MM, Kaiser M, Kepak T, Kremer LC, Kruseova J, Kuehni CE, Lambalk CB, van Leeuwen FE, Leiper A, Modan-Moses D, Morsellino V, Spix C, Kaatsch P, van Dulmen-den Broeder E, The PanCareLIFE Consortium Fertility Among Female Survivors of Childhood, Adolescent, and Young Adult Cancer: Protocol for Two Pan-European Studies (PanCareLIFE)

JMIR Res Protoc 2018;7(9):e10824

URL: <http://www.researchprotocols.org/2018/9/e10824/>

doi: [10.2196/10824](#)

PMID: [30215599](#)

©Marleen van den Berg, Marloes van Dijk, Julianne Byrne, Helen Campbell, Claire Berger, Anja Borgmann-Staudt, Gabriele Calaminus, Uta Dirksen, Jeanette F. Winther, Sophie D Fossa, Desiree Grabow, Victoria L Grandage, Marry M van den Heuvel-Eibrink, Melanie Kaiser, Tomas Kepak, Leontien C Kremer, Jarmila Kruseova, Claudia E Kuehni, Cornelis B Lambalk, Flora E van Leeuwen, Alison Leiper, Dalit Modan-Moses, Vera Morsellino, Claudia Spix, Peter Kaatsch, Eline van Dulmen-den Broeder, The PanCareLIFE Consortium. Originally published in *JMIR Research Protocols* (<http://www.researchprotocols.org>), 14.09.2018. This is an open-access article distributed under the terms of the Creative Commons Attribution License (<https://creativecommons.org/licenses/by/4.0/>), which permits unrestricted use, distribution, and reproduction in any medium, provided the original work, first published in *JMIR Research Protocols*, is properly cited. The complete bibliographic information, a link to the original publication on <http://www.researchprotocols.org>, as well as this copyright and license information must be included.